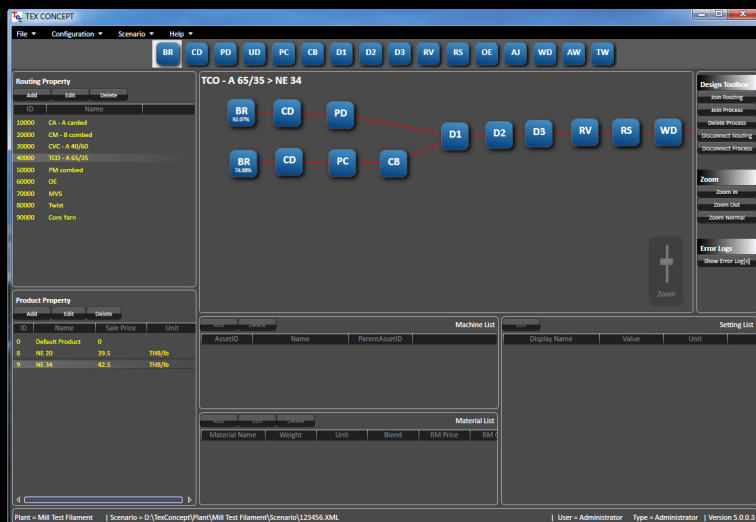




# Innovative Concepts



**The World's First and Only  
Textile Sales Profitability  
Software**

*"It is so good you will wonder how  
you ever lived without it."*

**Walter Buerghler**  
CEO of TexConcept

## TexConcept Textile Sales Forecast Software

TexConcept is an advanced textile production, capacity and profitability software. A world first, a textile software that can tell the factory owner within minutes after setup how profitable his factory is running and more importantly how profitable it can be. The software can predict the operating profit based on the sales forecast or investment projections.

This software was developed in partnership with a Germany company with over 30 years in the textile industry who specialise in this area of the business. The main features of this system provided as standard are as follows.

**Tex** Support multiple factories and scenarios

**Tex** Setup and design your own manufacturing routing

**Tex** Configure each factory asset based on Product

**Tex** Support for multi sales currencies

**Tex** Allow advance material mixing and processing

**Tex** Production Planning

- Compare different production plans
- Automated profit optimisation algorithm
- Manage machine utilisations
- Find machine bottlenecks
- View production plan profitability

**Tex** Manage your budget and investment plans and examine the effect on your profitability

For more information please contact [sales@iconcepts.co.th](mailto:sales@iconcepts.co.th)

**Profitability**

1. Unit of Coverage comes from Budget Plan

2. Unit of Price comes from default Currency per Weight

Machine	SP	Min Coverage	Actual Coverage	Unit	Rock Bottom Price	Sale Price	Unit	Profit Per Unit	% v. Min Coverage
<b>Process : RS</b>									
Routing : CA - A carded									
Product : (E)NE 20									
Toyota RX 220	864	16.22	20.17	THB	37.04	41.00	THB/kg	5.95	36.7
Product : (E)NE 32									
Toyota RX 220	864	16.22	13.81	THB	47.68	44.50	THB/kg	-3.17	-19.7
Rawer 0 33	1,200	16.22	15.06	THB	45.91	44.50	THB/kg	-1.41	-8.7
Product : (E)NE 30									
Rawer 0 33	1,200	16.22	1,000.00	THB	1,004.02	55.00	THB/kg	-1,193.52	-193.52
Rawer 0 33	1,200	16.22	1,000.00	THB	1,004.47	55.00	THB/kg	-1,193.97	-193.97
Product : (E)NE 32									
Rawer 0 33	1,200	16.22	1,000.00	THB	2,203.38	55.00	THB/kg	-2,148.38	-348.38
Rawer 0 33	1,200	16.22	1,000.00	THB	2,203.83	55.00	THB/kg	-2,148.83	-348.83
Product : (E)NE 40									
Rawer 0 33	1,200	16.22	4.71	THB	77.06	64.00	THB/kg	-13.06	-19.0
Rawer 0 33	1,200	16.22	4.94	THB	78.65	64.00	THB/kg	-14.65	-20.7
Product : (E)NE 30 Export									
Rawer 0 33	1,200	16.22	1,000.00	THB	492.50	57.75	THB/kg	-434.75	-72.0
Rawer 0 33	1,200	16.22	1,000.00	THB	492.96	57.75	THB/kg	-435.21	-72.5
<b>Routing : CVC - A 40/60</b>									
<b>Routing : TCO - A 65/35</b>									
<b>Routing : PM combined</b>									
<b>Routing : Core Yarn</b>									
<b>Process : OE</b>									
<b>Process : AJ</b>									
<b>Process : TW</b>									

**Production Plan (Mill Text Filament > 123456 > Dec 1st Production Plan)**

Name: Dec 1st Production Plan Working Day: 30 Save Send All

Routing: CA - A carded Product: NE 20 Min Machine: 0 Add Root Plan Clear All Refresh From Setting

Machine	SP	Min Coverage	Actual Coverage	Unit	Rock Bottom Price	Sale Price	Unit
<b>CVC - A 40/60 &gt; NE 20</b>							
Toyota RX 220	864	16.22	20.17	THB	36.31	40.00	THB/kg
<b>OE &gt; NE 20</b>							
ACD 208	238	121.88	211.44	THB	28.24	33.00	THB/kg
<b>TCO - A 65/35 &gt; NE 20</b>							
Toyota RX 220	864	16.22	20.20	THB	34.42	39.50	THB/kg
<b>PM combined &gt; NE 40</b>							
Toyota RX 220	864	16.22	21.20	THB	65.32	72.00	THB/kg
<b>MVS &gt; NE 40</b>							
ACD 303	401	306.53	468.23	THB	55.64	62.00	THB/kg

**Total Output:** 627,153.31 Kg

Product Capacity: 4,473.47 Kg  
Input: 5,117.54 Kg  
Product: 4,401.09 (72.38) Kg  
Waste: 716.46 (14.00%) Kg

**Machine Asset Capacity Utilization**

Machine Asset	Capacity	Utilization
E 775 - 30 (E 2/4 - E 4/2)	811.64/811.64	100%
E 775 - 12 (E 2/4 - E 4/2)	811.64/811.64	100%
E 775 - 12 (E 2/4 - E 4/2)	811.64/811.64	100%
E 775 - 12 (E 2/4 - E 4/2)	811.64/811.64	100%
E 775 - 14 (E 2/4 - E 4/2)	811.64/811.64	100%
E 775 - 15 (E 2/4 - E 4/2)	811.64/811.64	100%

Machine's: 5.51  
Total Capacity: 4,889.87 Kg

Visit us @ [www.iconcepts.co.th](http://www.iconcepts.co.th)

Where your dream become reality